

# Kineo Totara TXP

One Platform  
Multiple Learning Outcomes



# Built by Totara, Powered by Kineo

Say goodbye to multiple learning systems and hello to one seamless learning and talent Platform.

Our all-in-one solution combines the power of Totara's TXP with Kineo's extensive integrations and capabilities, all backed and supported by our unrivaled managed services. We provide you with everything you need to deliver a unified talent experience.

Totara Learn, Engage, and Perform are uniquely flexible tools that are designed to work together seamlessly to create a single space, that combines skills with performance to shake up the way you approach development.

We're not just a technology provider, we are your learning experience partner. Going beyond platform design, we create freedom and flexibility with end-to-end support to optimize your resources, ignite your learning strategy and create a smoother, more impactful training environment.

Our mission is to ensure your learning and development strategy flourishes under our expert guidance. Right from the start, our Managed Services seamlessly integrate into your journey – from migration and implementation to fostering a dynamic learning ecosystem.

No matter your approach, we'll be there to help make development at work engaging and, impactful.

- Harness the power of data with Kineo Analytics for better decision-making
- Ignite modern learning experiences with personalized and flexible learning solutions
- Close the skills gap and prepare for tomorrow's challenges today
- Unleash the power of social to build a vibrant, connected learning culture

1.7  
million users

Across  
156  
organisations

42K  
Live Learning Plans

5.5M  
Seminar sign ups



# The Talent experience platform with a difference

## Learn ●

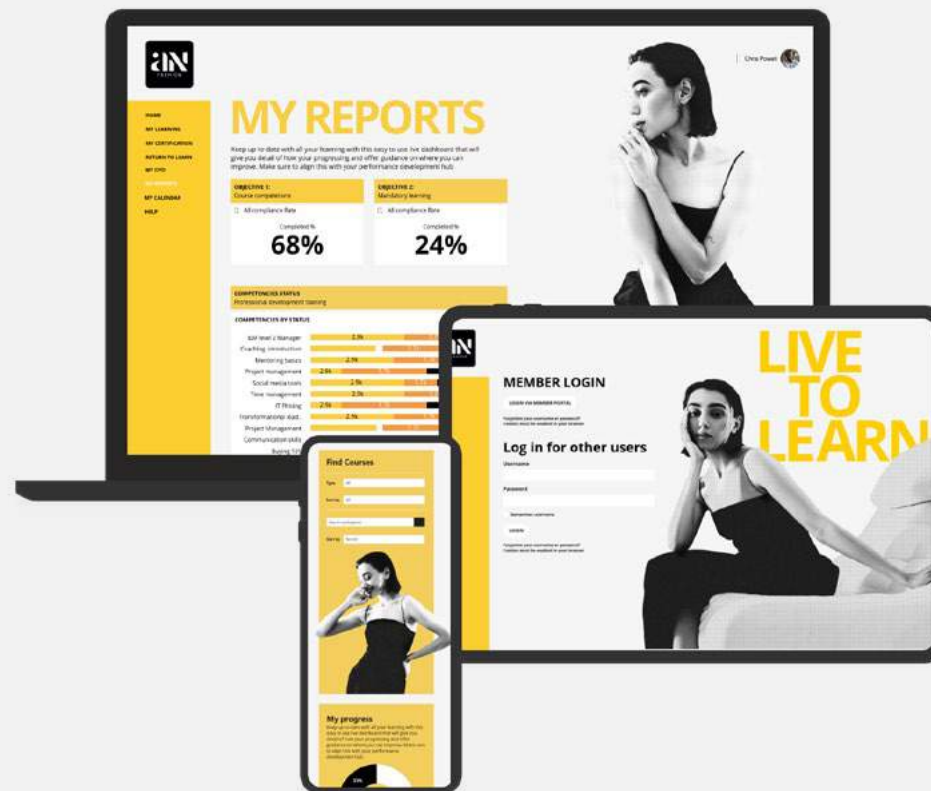
The world's most powerful and flexible Learning Management System (LMS) is trusted by thousands of organizations.

## Engage ●

The user-friendly Learning Experience Platform (LXP) that engages and unites your workforce.

## Perform ●

The advanced performance management system that drives sustainable productivity and skills development.



## ● Kineo Managed Services

Our dedicated Kineo team offers personalized expertise and smart tools for your learning journey, ensuring ongoing success. Our built-in, always-on Managed Services include implementation, onboarding, guidance, Kineo data analytics, integrations, training, monitoring, patching, upgrades, roadmap planning, and more.

## ● Premium Services

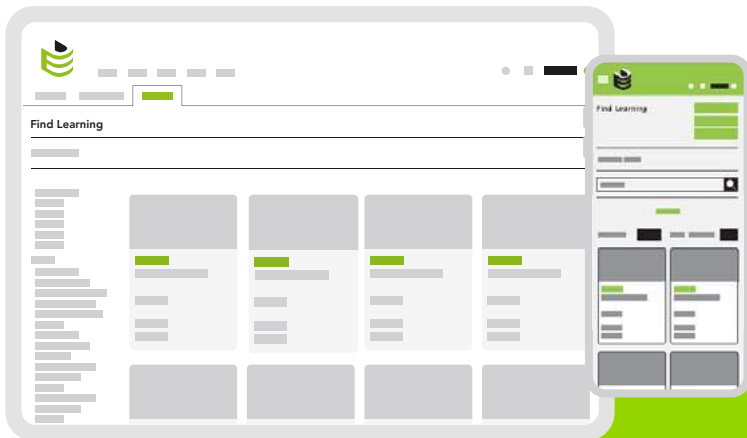
Access Kineo's Premium Services for tailored platforms, insights, seamless connections, custom development, analytics, e-commerce, and integration hub.

# Totara Learn

Powered by Kineo

The enterprise LMS is trusted by global brands to lead the learning experience.

Take control of direct learning and certification across your organization with the world's most powerful and flexible learning platform. Design, launch, and measure your learning experiences at pace, tailoring delivery to each person's needs.



Learn adapts to meet all your knowledge and training needs at scale, in the way that's just right for you.



## Deliver and assess.

Powerful workflows and reporting to drive enterprise-wide skills development, audit-ready compliance, and exceptional team performance



## Create a learning culture.

Shape engaging courses that bring knowledge-building into everyday activities



## Integrate seamlessly.

Connect Learn to your existing Human Capital Management tools and other business-critical systems



## Unlock learning data

Get the power to collect, visualize and analyze learner data at any level with Kineo Analytics, included as a standard in our LMS

# Totara Engage

Powered by Kineo

Share, learn, and grow with the easy-to-use Learning Experience Platform.

Break down knowledge silos and unleash the power of your talent's expertise with Engage. Empower your workforce to share, learn, and grow all in the flow of work.

Engage unlocks the relationships and self-directed learning that people need to thrive in the new world of work.



## Encourage engagement.

Foster a collaborative culture that recognizes, rewards, and inspires contributions



## Tailored skills acquisition.

Personalized learning and content to help your people grow in line with strategic goals



## Choose your delivery.

Social sharing adds another dimension to your organization's learning strategy



## Drive engagement through data insights

Get the power to collect and improve learner engagement with Kineo Analytics, included as a standard in our LXP



# Totara Perform

Powered by Kineo

Get the flexibility and power to deliver effective performance management across your whole organization with Perform.

Create a high-performance culture that constantly adapts to opportunity and monitors the performance and development needs of your talent with ease. Perform combines seamlessly with Learn and Engage to power the Talent Experience Platform, unlocking your people's full potential.

## Advanced Performance Management



### Skills-based learning

Competency profiles make to skills and offer a personalized plan for learning and development



### Robust flexibility

Enables both traditional and continuous performance management processes



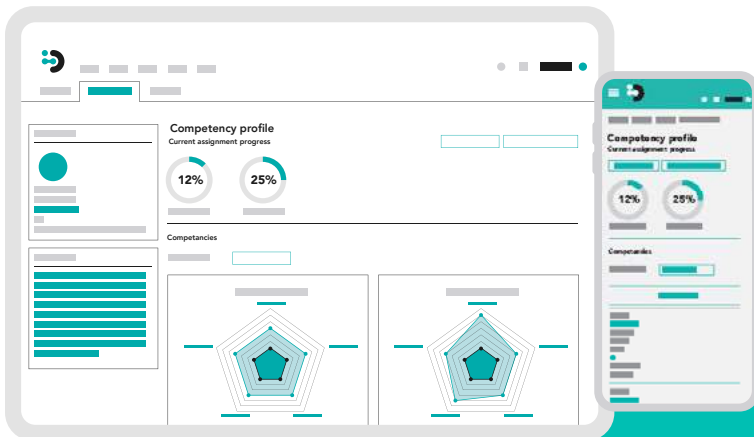
### Supportive environments

Build a coach-mentor culture with check-ins, reviews, and fast feedback



### Improve performance outcomes with data

Everything you need to measure your learning outcomes, make smarter decisions and continuously improve performance





# What our customers have to say

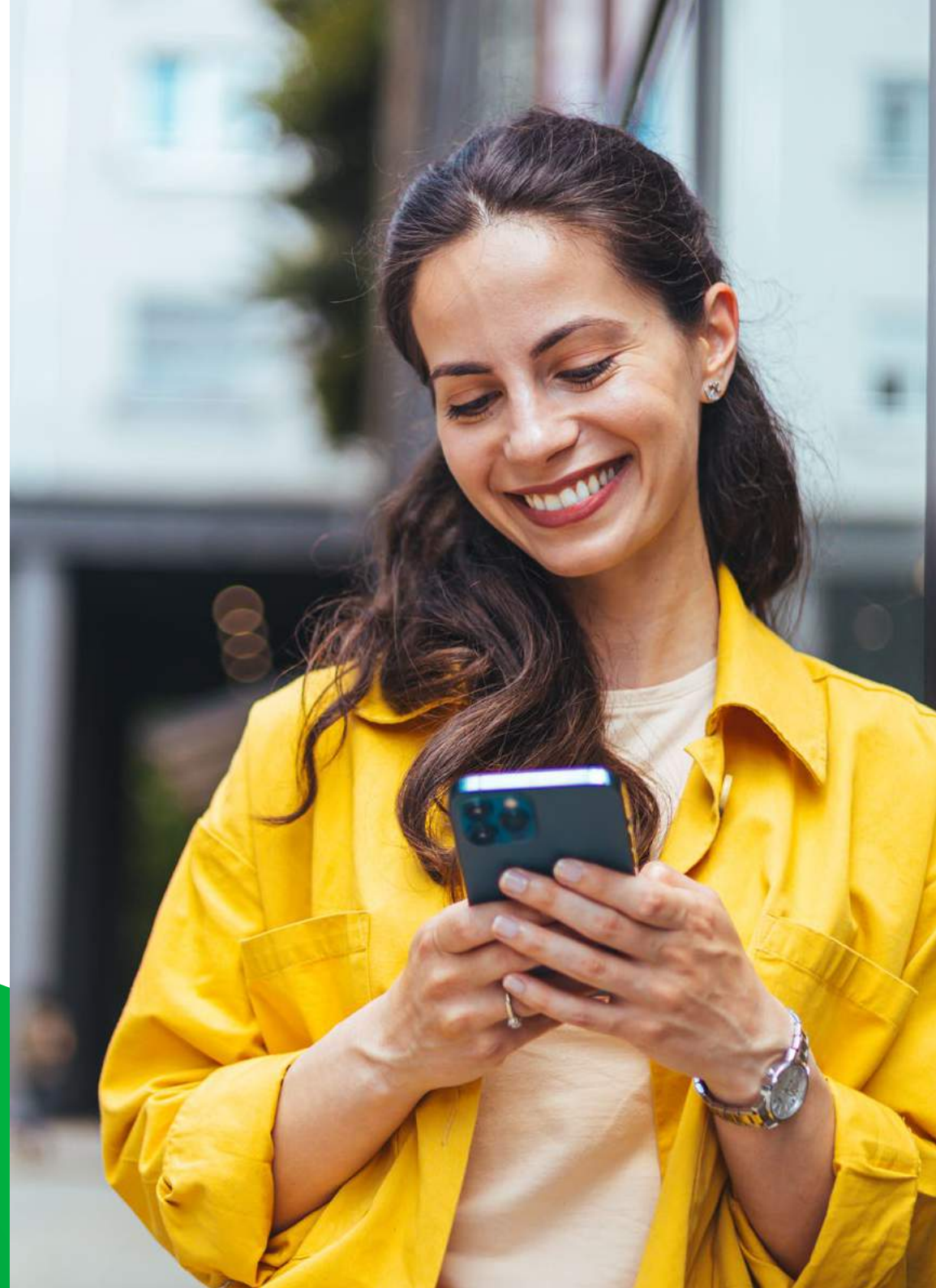
"Kineo were clued up about current thinking in learning and design and just as willing as us to get creative. They absolutely bought into what we were trying to achieve and were really honest about what was possible now and in the future. It was their open, enthusiastic collaboration with us that helped to turn our wild ideas into an innovative reality"

**Katie White,**

Learning Design and Programmes Manager,  
Mitchells and Butlers

Ready to transform your learning experience?  
Schedule a personalized demo today and discover the  
power of Kineo and Totara. Let's take your learning  
strategy to the next level together!

[Book now](#)



## Designed for results

Everything we do at Kineo stems from a simple idea – if we design a better learning experience, together we'll get better results.

Kineo helps the world's leading businesses improve performance through learning and technology. We're proud of our reputation for being flexible and innovative, and of our award-winning work with clients across the world.

Whatever your business challenge, we will partner with you every step of the way to find the learning solution that fits best – and delivers results.

Whatever your business challenge, we will partner with you every step of the way to find the learning solution that fits best – and delivers results.

So, how can we help you?  
Get in touch about your digital learning challenges.

---

### Kineo UK

info@kineo.com  
+44 (0)1 273 764 070

### Kineo USA

info@kineo.com  
+1 312 846 6656

### Kineo APAC

hello@kineo.com.au  
+61 1300 303 318

---