

Kineo Analytics: unlock your learning data and prove your impact

KINEO ANALYTICS FOR LEARNING PLATFORMS

So, you've successfully launched your talent experience platform! You know your learners are completing training and engaging with it but do you know the true impact of your investment? Are there untapped opportunities and outcomes?

Kineo Analytics is included as standard with our Talent Experience Platform and captures data and insights so you can evidence the success of your platform and demonstrate your learning's ability to close performance gaps.

By analyzing your people's learning habits, you can make data-driven decisions that improve performance outcomes, improve engagement, and create focused experiences that deliver on your learning objectives and business goals.



68
PERCENT
COMPLETION



Collect data across the learning experience

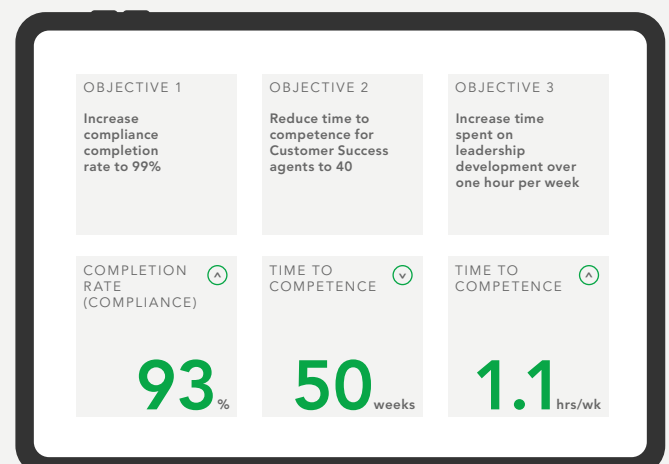
Track data points across the entire learning experience to answer key questions.

Measurement	Questions you can answer with Kineo Analytics
Compliance	<ul style="list-style-type: none"> • Where do you stand with compliance progress? • What areas do you need to improve? • How have employees and departments performed against past years and objectives? • How effective are your compliance programs? • Do employees behave differently as a result of training? • How much detail do I need to show stakeholders to build engagement and buy-in?
Engagement	<ul style="list-style-type: none"> • What communities and collaboration opportunities are delivering results? • Are there trends where learning and collaboration are closely linked? • When and how your learners are most active • Is their attention spread over multiple sessions? • Are they coming back for more after completing the learning?
Skills	<ul style="list-style-type: none"> • How long does it take to gain competency for onboarding? • How do you map skills & competencies to roles and career pathways? • How effective are your assessment methods? • What competency and engagement gaps do you have and how can you map them to all learning? • What do they already know and where are the gaps? • How are learners performing against learning objectives?



View data trends in your Kineo Analytics Dashboard

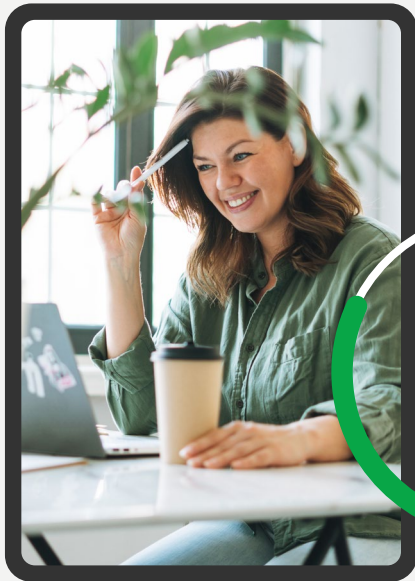
Built into your talent experience platform, the Kineo Analytics Dashboard offers a powerful business intelligence tool to track data trends and support your data analysis. The dashboard's visualizations are easy to read and perfect to drop into presentations and reports.





Collate and compare data across multiple learning experiences

Track and compare data across your entire platform, all in the same dashboard. You can evidence and contrast the effectiveness of learning approaches, durations and release patterns, as well as against performance scores and L&D impact. The capability of Kineo Analytics will support you in creating compelling 'data stories' that inform your learning strategies.



80
PERCENT



Get informed and transform your learning

Our Customer Success Team is here to help you measure your learning impact and improve the effectiveness of your digital learning and performance strategy. We're here to help you connect the dots; see how your learning is performing, how that relates to business performance and what you should do next to improve results.

Get in touch to hear more about how Kineo Analytics can empower your L&D decisions and the free support we offer our customers.

Kineo UK

info@kineo.com
+44 (0)1 273 764 070

Kineo USA

usinfo@kineo.com
+1-312-846-6656

Kineo APAC

info@kineo.com.au
1300 303 318

www.kineo.com